

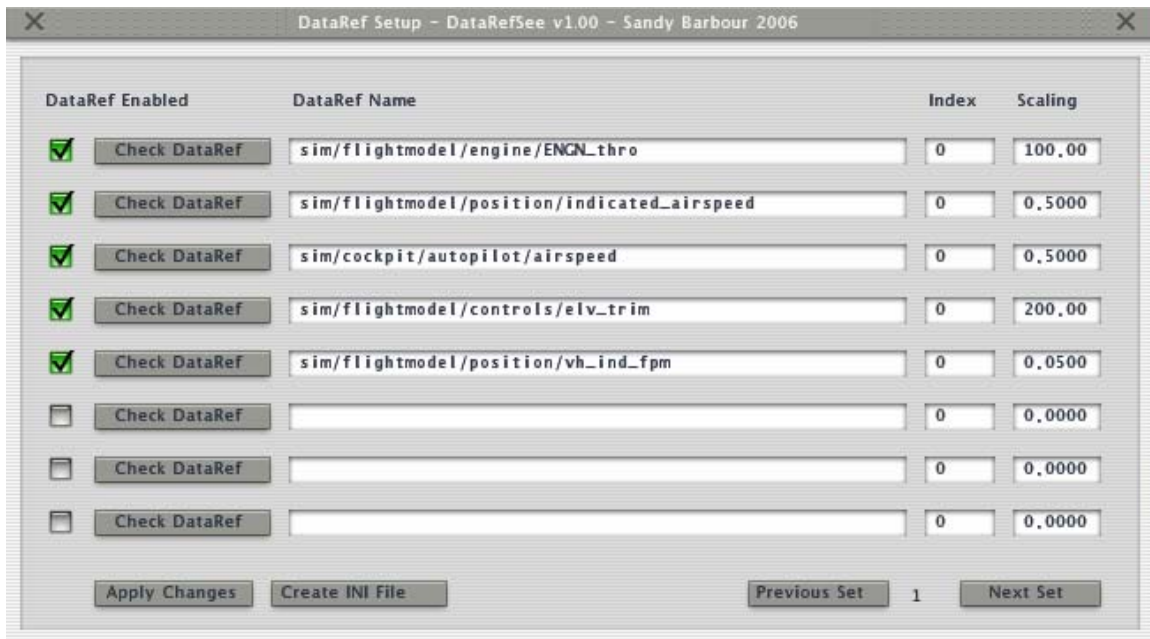
# DataRefSee Plugin Quick Start Guide

This document describes the operation of my DataRefSee plugin.  
This plugin will allow you view up to 24 datarefs graphically.

## Installation

Copy the plugin into the Resources/plugins directory.  
Copy the DataRefSee.ini file into the same directory as the plugin.

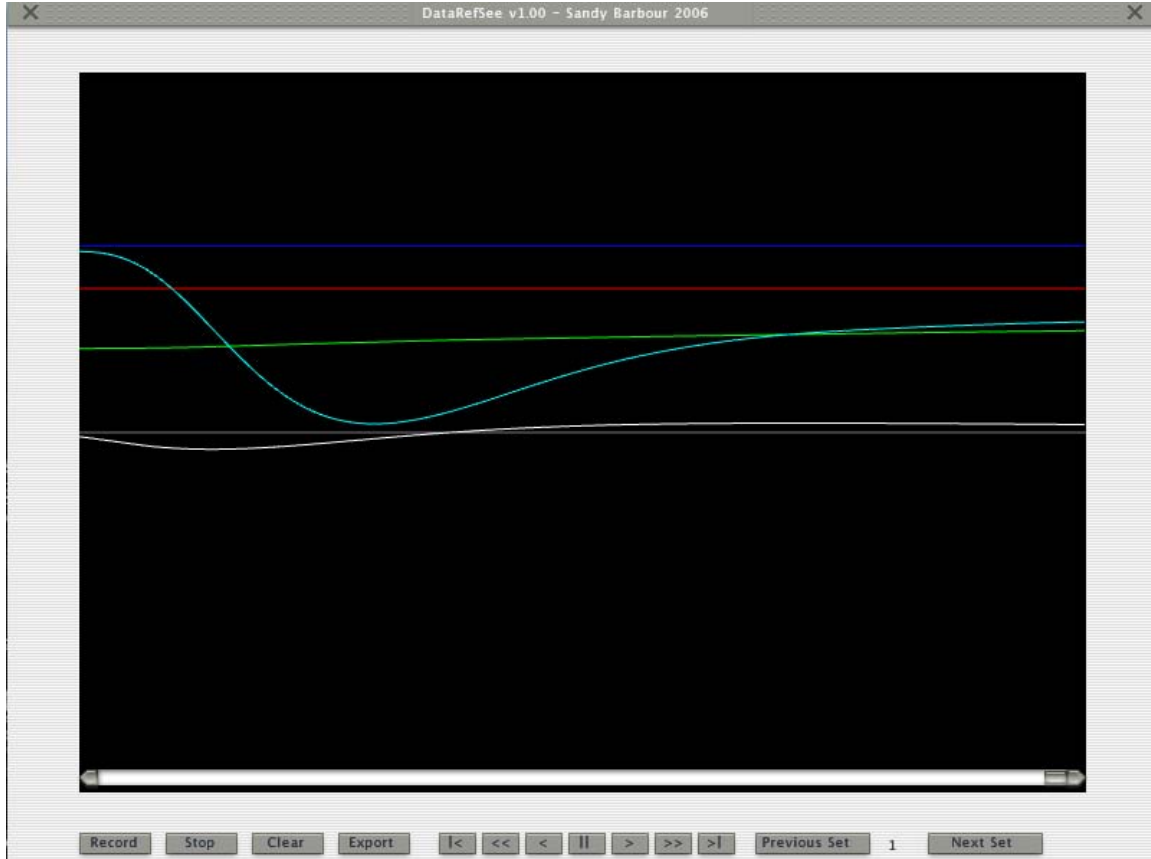
## DataRefSee DataRefs Panel



This panel show the datarefs that have been read from the DataRefSee.ini file.  
The check box on the left will be checked if the datarefs is valid.  
They will be unchecked if the datarefs does not exist.  
The index is used for array datarefs and is the dataref element that you want to plot.  
The edit boxes on the right show the scaler that the dataref will be multiplied by.  
You can edit these in a session, use the Apply button to see the changes in the graph window.  
Once you are happy with the setting then you can use the Create INI File button to create a new INI file that you can then use.  
You can view the previous/next 8 datarefs by using the the Previous and Next buttons.

# DataRefSee Plugin Quick Start Guide

## DataRefSee Graphics Panel



In order to view the datarefs they have to be enabled in the DataRefSee DataRefs Panel.

Press the record button and the datarefs will be drawn graphically.

When the graph reaches the right hand side the graph window will scroll to the left.

Press stop when you have recorded enough.

After you have recorded some data you can use the VCR type buttons to view it.

You can go to the start, end, skip forward and backward and play the graph in a forward or reverse direction

Clear will remove all recorded entries.

Use the Previous and Next buttons to see the other dataref graphs.

You can export the data to a DataRefSeeN.csv file, this can then be imported to spreadsheet program etc.

This will be stored in the same directory as the plugin.

All 8 datarefs are exported, any non used will have zero as the value.

The file will be named DataRefSee1.csv if the set was number 1 and DataRefSee3.csv if the set was number 3.

Written by Sandy Barbour – 20<sup>th</sup> March, 2006

Updated by Sandy Barbour -Sunday, 26 March 2006

# DataRefSee Plugin Quick Start Guide

## Example DataRefSee.ini file.

### [DATASET1]

Name1 = sim/flightmodel/engine/ENGN\_thro

Scaling1 = 100.0

Index1 = 0

Name2 = sim/flightmodel/position/indicated\_airspeed

Scaling2 = 0.5

Name3 = sim/cockpit/autopilot/airspeed

Scaling3 = 0.5

Name4 = sim/flightmodel/controls/elv\_trim

Scaling4 = 200.0

Name5 = sim/flightmodel/position/vh\_ind\_fpm

Scaling5 = 0.05

### [DATASET2]

Name1 = sim/flightmodel/controls/ail\_trim

Scaling1 = 200.0

Name2 = sim/flightmodel/controls/elv\_trim

Scaling2 = 200.0

Name3 = sim/flightmodel/controls/rud\_trim

Scaling3 = 200.0

### [DATASET3]

Name1 = sim/flightmodel/position/theta

Scaling1 = 1.0

Name1 = sim/flightmodel/position/phi

Scaling2 = 1.0

Name2 = sim/flightmodel/position/psi

Scaling2 = 1.0